

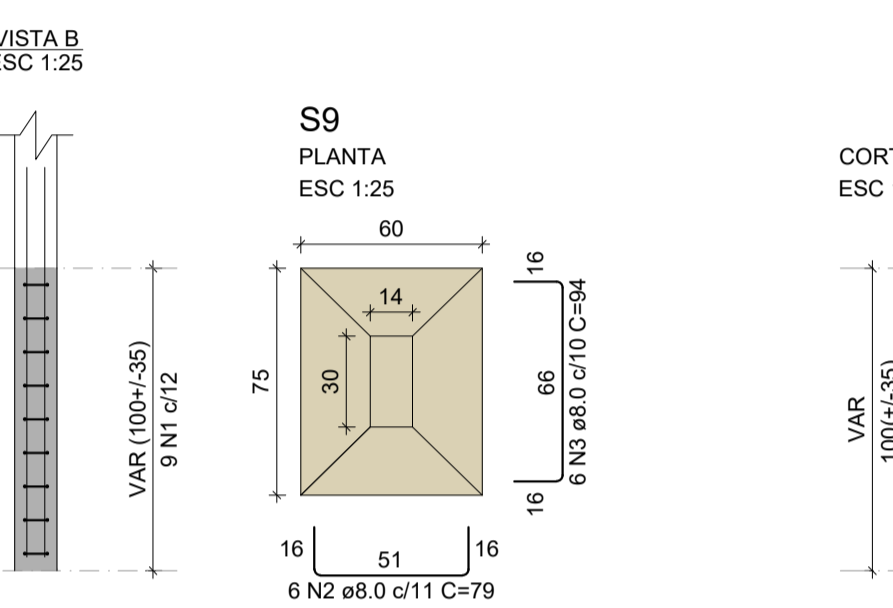
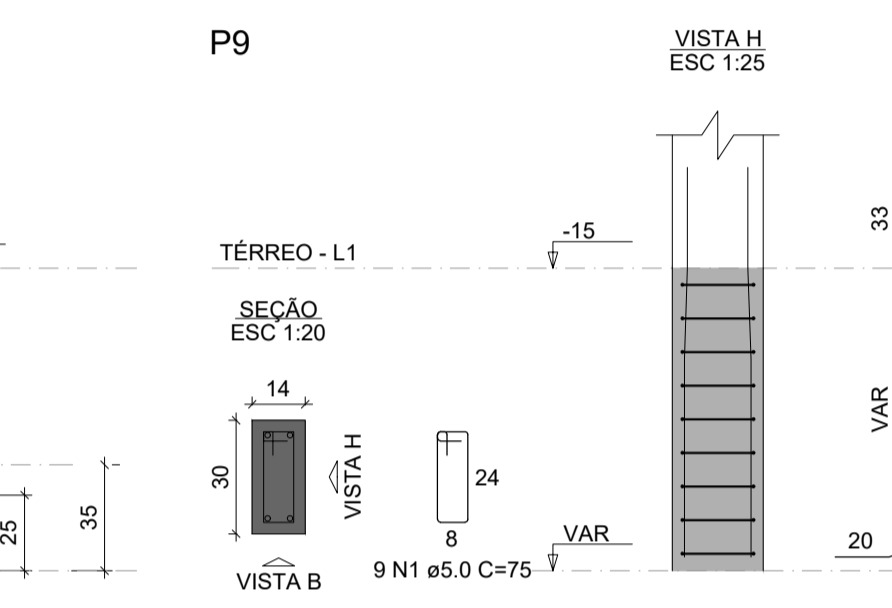
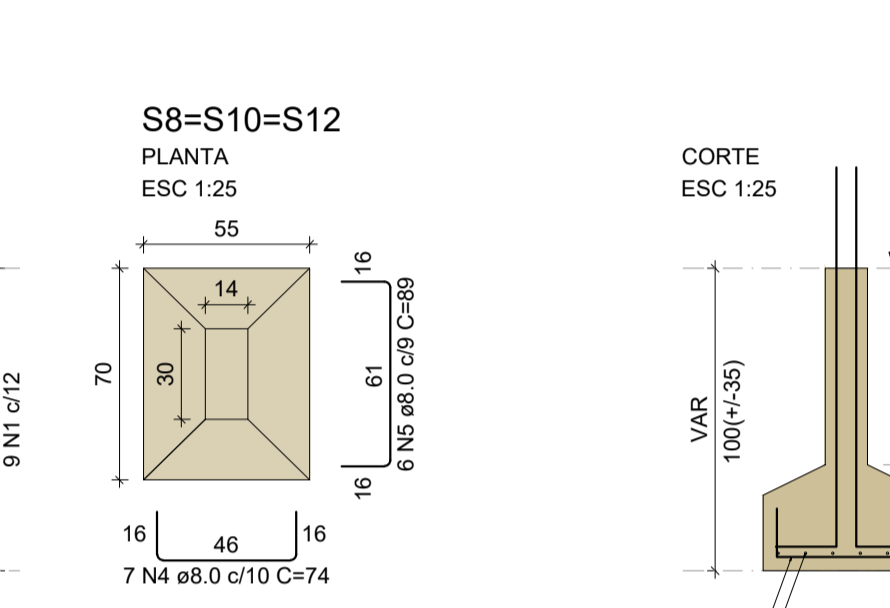
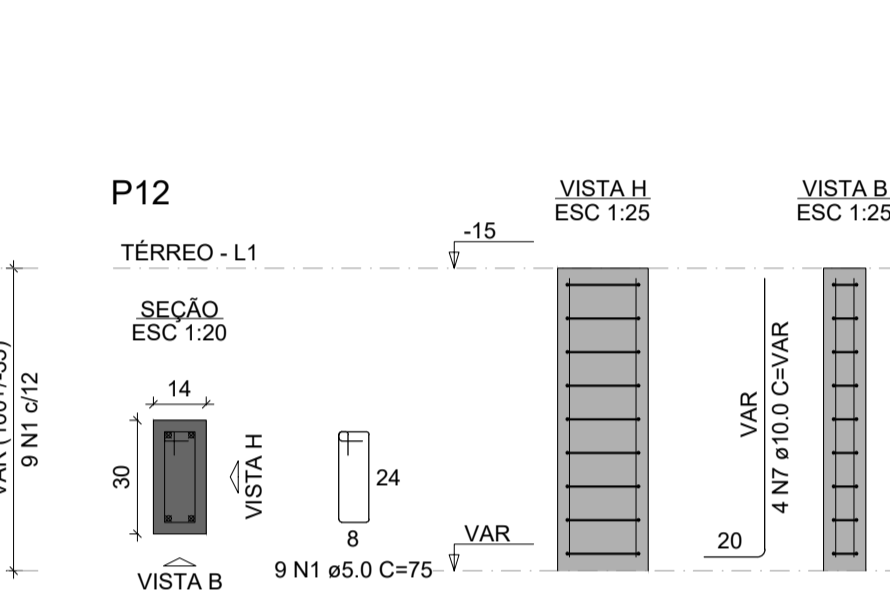
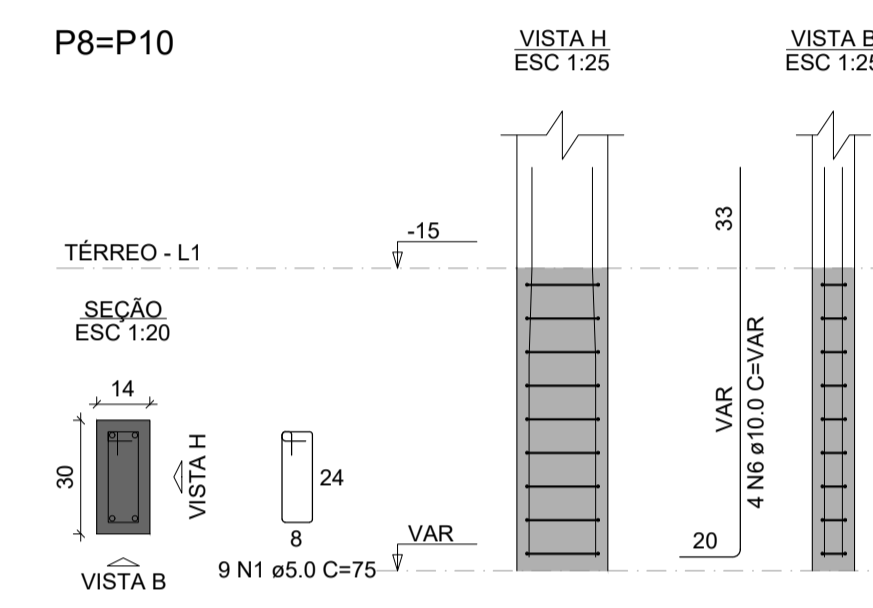
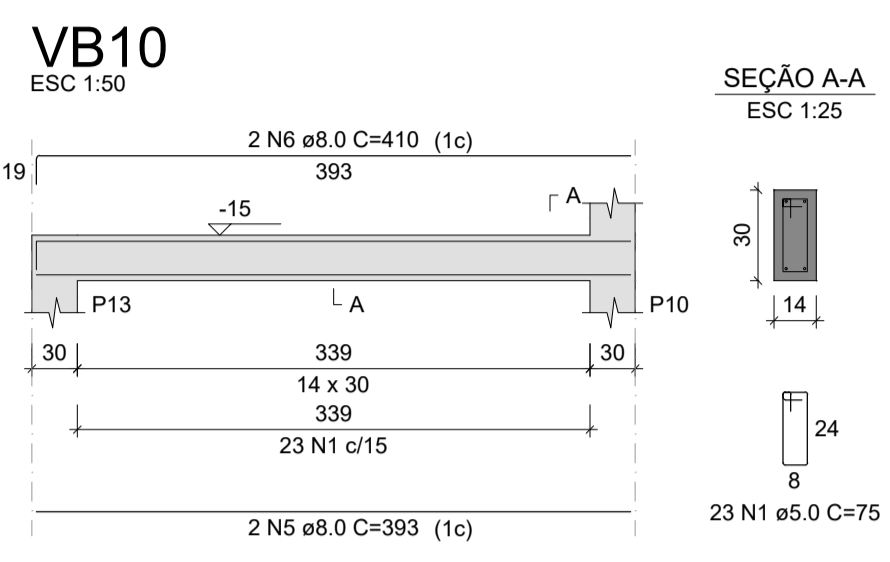
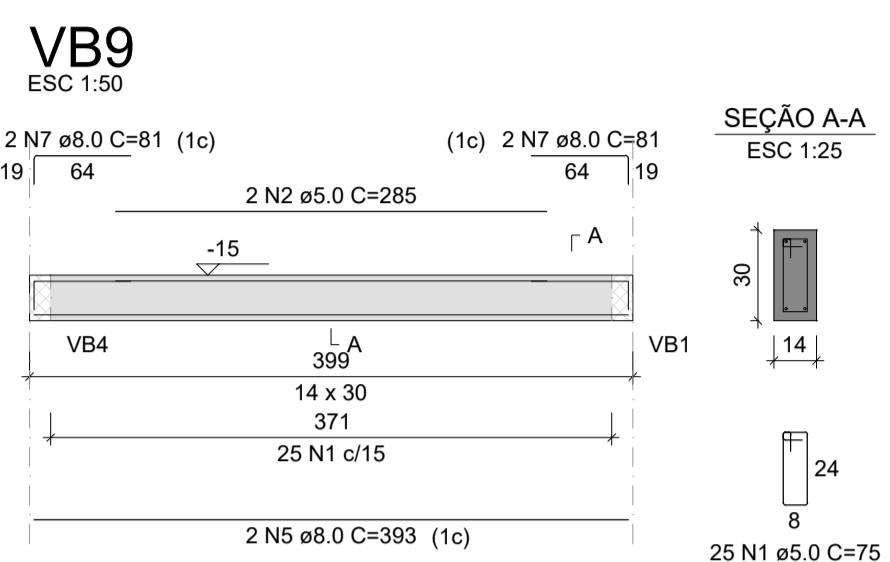
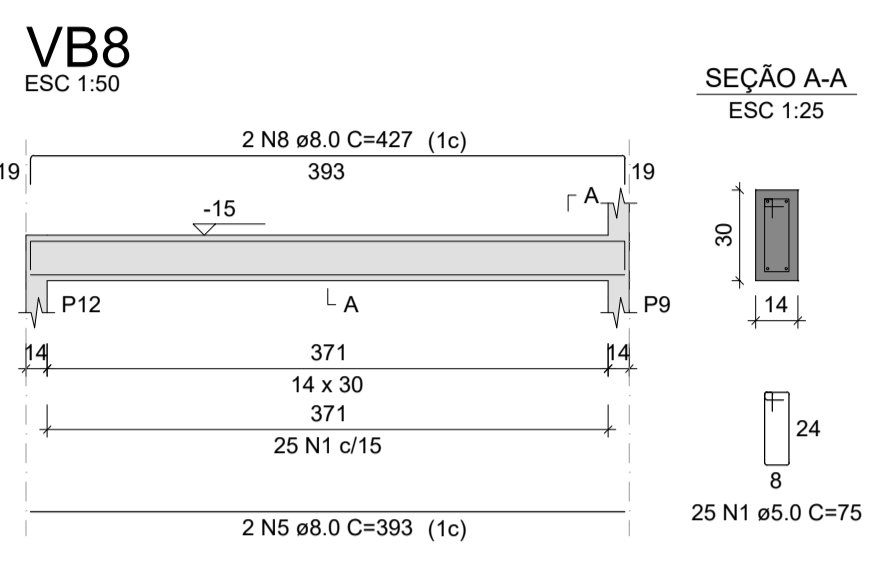
RELAÇÃO DO AÇO

AÇO	N	DIAM (mm)	QUANT	C.UNIT (cm)	C.TOTAL (cm)
CA60	1	5.0	221	75	16575
CA50	2	5.0	4	285	1140
	3	8.0	4	793	3172
	4	8.0	4	827	3308
	5	8.0	10	393	3930
	6	8.0	4	410	1640
	7	8.0	8	81	648
	8	8.0	2	427	854

RESUMO DO AÇO

AÇO	DIAM (mm)	C.TOTAL (m)	PESO + 10% (kg)
CA50	8.0	135.5	58.8
CA60	5.0	177.2	30
PESO TOTAL (kg)			88.8
CA50		58.8	
CA60		30	

Volume de concreto (C-25) = 1.39 m³
Área de forma = 24.43 m²



RELAÇÃO DO AÇO

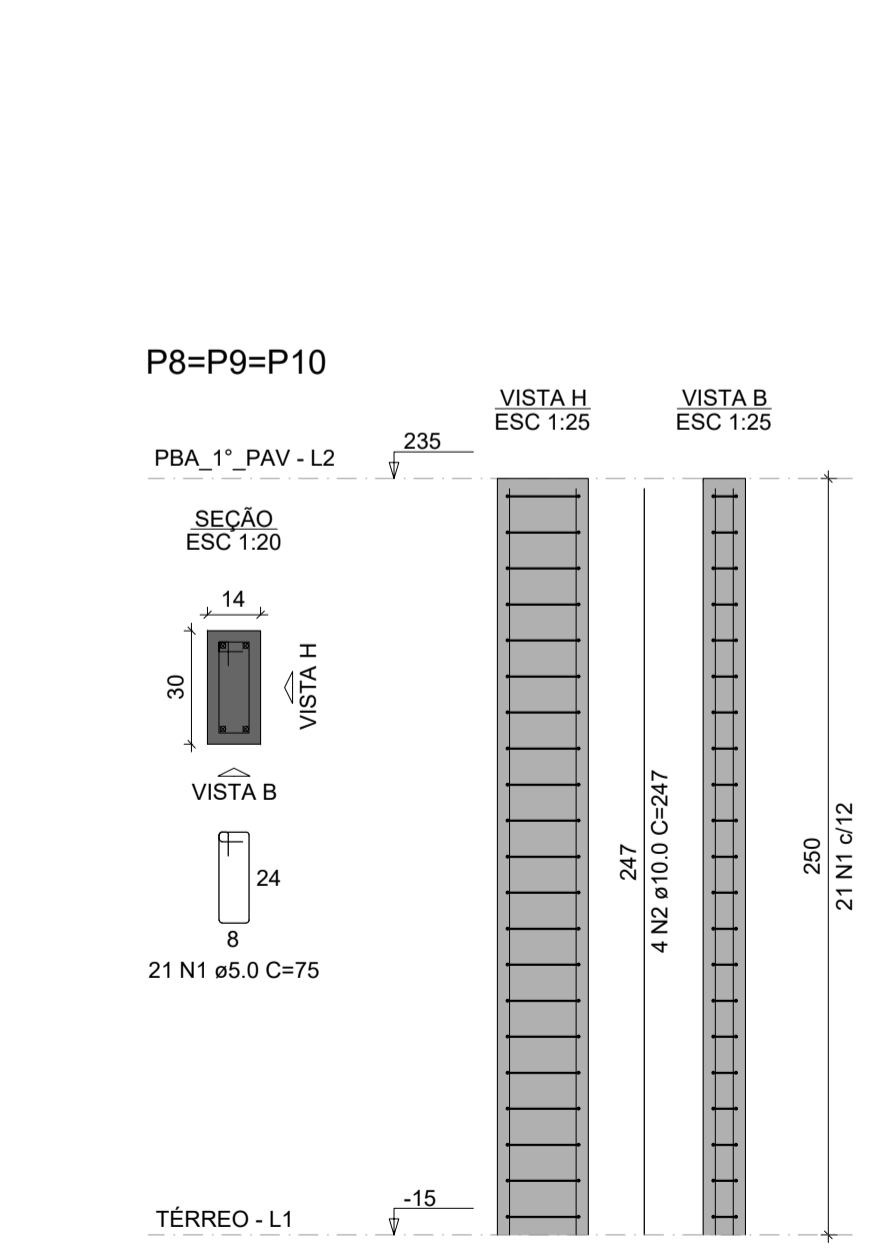
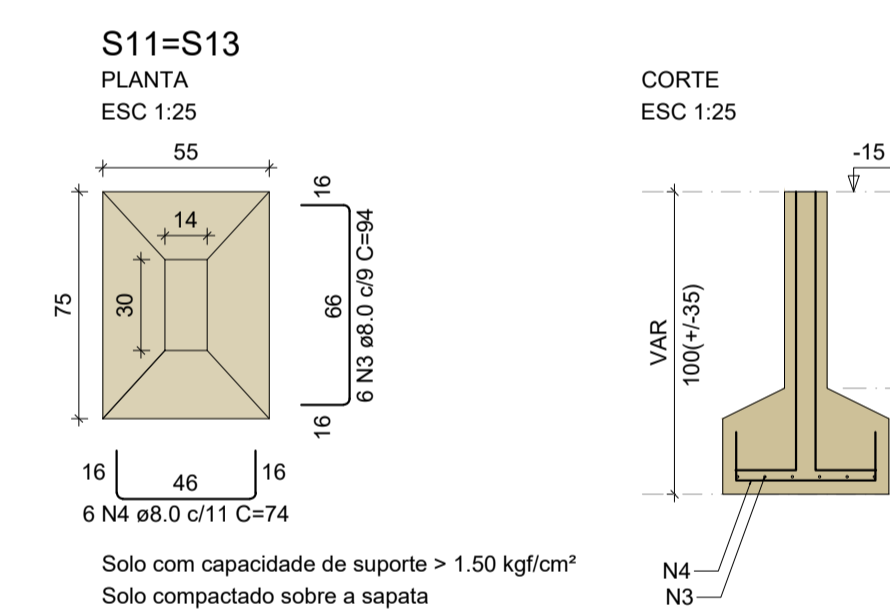
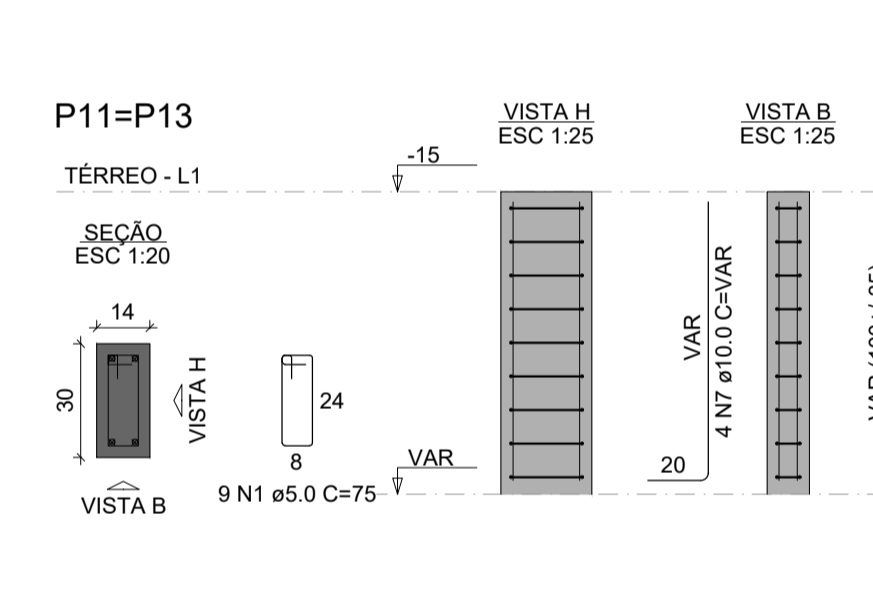
AÇO	N	DIAM (mm)	QUANT	C.UNIT (cm)	C.TOTAL (cm)
CA60	1	5.0	54	75	4050
CA50	2	8.0	6	79	474
	3	8.0	18	94	1692
	4	8.0	33	74	2442
	5	8.0	18	89	1602
	6	10.0	12	VAR	VAR
	7	10.0	12	VAR	VAR

RESUMO DO AÇO

AÇO	DIAM (mm)	C.TOTAL (m)	PESO + 10% (kg)
CA50	8.0	62.1	27
CA60	5.0	40.5	6.9
PESO TOTAL (kg)			33.9
CA50		47.9	
CA60		6.9	

Solo com capacidade de suporte > 1.50 kgf/cm²
Solo compactado sobre a sapata
peso específico > 1600.00 kgf/m³

Volume de concreto (C-30) = 0.16 m³
Volume de concreto (C-25) = 0.72 m³
Área de forma = 7.28 m²



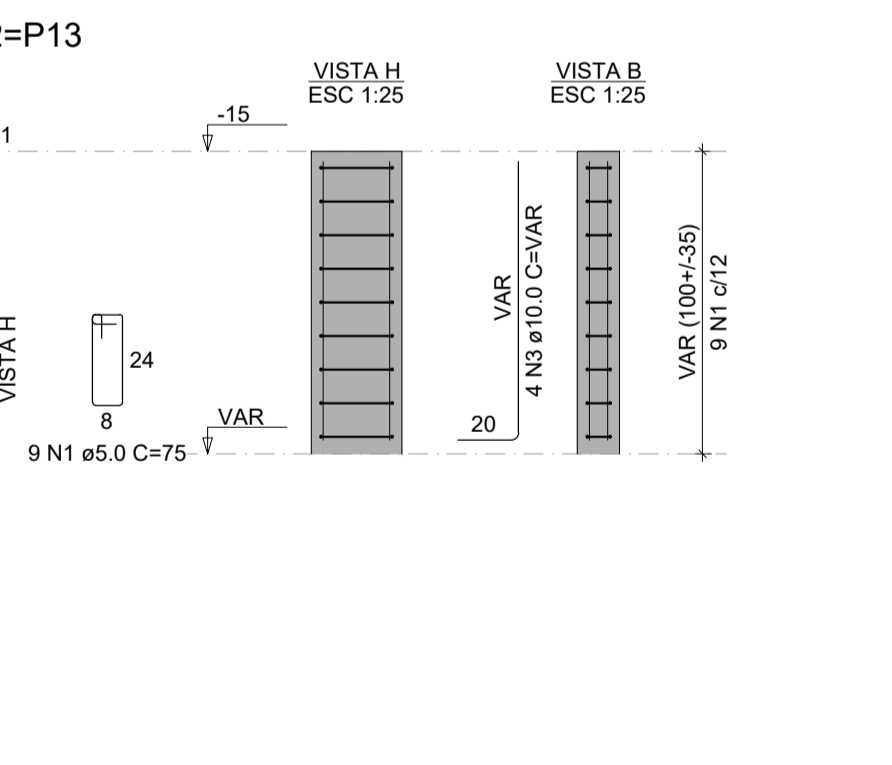
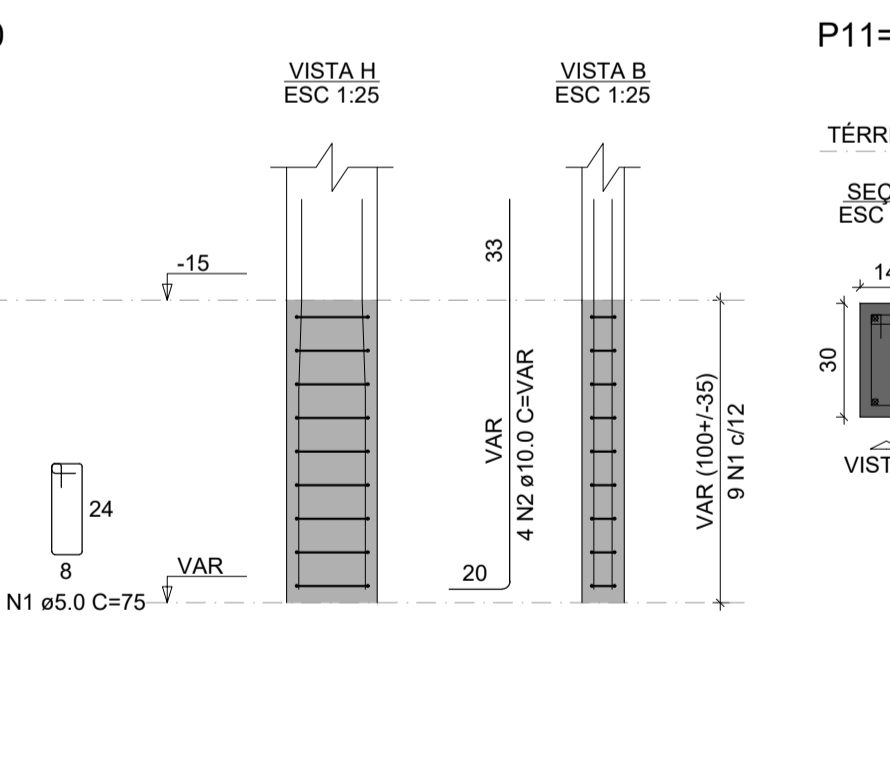
RELAÇÃO DO AÇO

AÇO	N	DIAM (mm)	QUANT	C.UNIT (cm)	C.TOTAL (cm)
CA60	1	5.0	63	75	4725
CA50	2	10.0	12	247	2964

RESUMO DO AÇO

AÇO	DIAM (mm)	C.TOTAL (m)	PESO + 10% (kg)
CA50	10.0	29.6	20.1
CA60	5.0	47.3	8
PESO TOTAL (kg)			28.1
CA50		20.1	
CA60		8	

Volume de concreto (C-30) = 0.32 m³
Área de forma = 6.60 m²



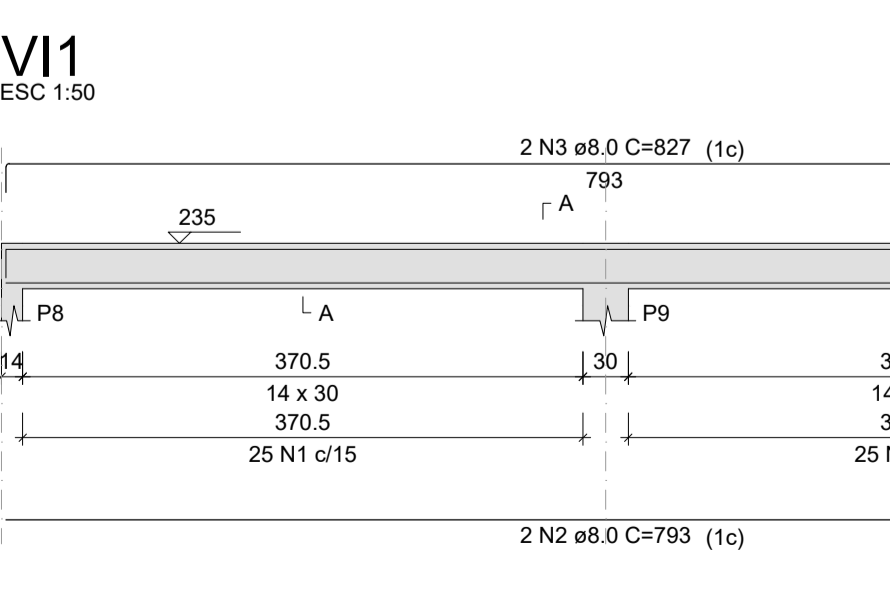
RELAÇÃO DO AÇO

AÇO	N	DIAM (mm)	QUANT	C.UNIT (cm)	C.TOTAL (cm)
CA60	1	5.0	54	75	4050
CA50	2	10.0	12	VAR	VAR
	3	10.0	12	VAR	VAR

RESUMO DO AÇO

AÇO	DIAM (mm)	C.TOTAL (m)	PESO + 10% (kg)
CA50	10.0	30.8	20.9
CA60	5.0	40.5	6.9
PESO TOTAL (kg)			27.8
CA50		20.9	
CA60		6.9	

Volume de concreto (C-30) = 0.16 m³
Área de forma = 3.43 m²



RELAÇÃO DO AÇO

AÇO	N	DIAM (mm)	QUANT	C.UNIT (cm)	C.TOTAL (cm)
CA60	1	5.0	50	75	3750
CA50	2	8.0	2	793	1586
	3	8.0	2	827	1654

RESUMO DO AÇO

AÇO	DIAM (mm)	C.TOTAL (m)	PESO + 10% (kg)
CA50	8.0	32.4	14.1
CA60	5.0	37.5	6.4
PESO TOTAL (kg)			20.5
CA50		14.1	
CA60		6.4	

Volume de concreto (C-25) = 0.31 m³
Área de forma = 5.48 m²

PROJETO ESTRUTURAL

OBRA: CONSTRUÇÃO DE UM ESPAÇO MOTOCICLISTICO

PROPRIETÁRIO: PREFEITURA MUNICIPAL DE RONDOLÂNDIA
CPF/ CNPJ: 04.221.486/0001-49

ENDEREÇO: LINHA 07, RONDOLÂNDIA - MT

AUTOR DO PROJETO: JANETE MOREIRA LOPES
ENGENHEIRA CIVIL
CREA/ CAU: 9742 D/RO

RESP. P/ EXECUÇÃO: [Signature]
CREA/ CAU: [Signature]

ESCALA: INDICADAS ASSUNTO: DETALHAMENTOS ESTRUTURAIS ARQUIBACADAS

FOLHA Nº: EST 03/05

NOME DO ARQUIVO DIGITAL: