

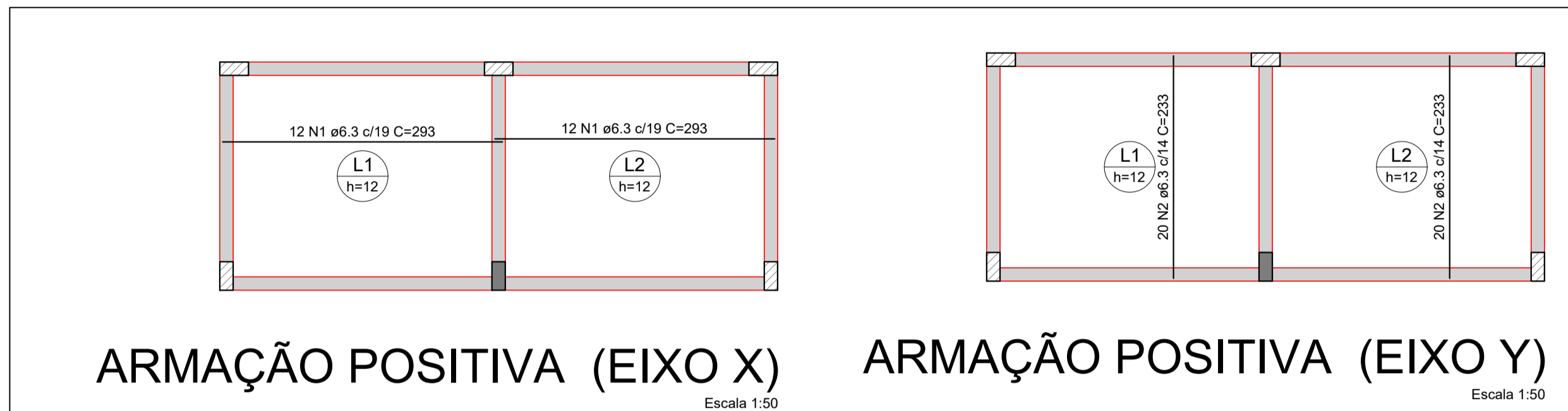
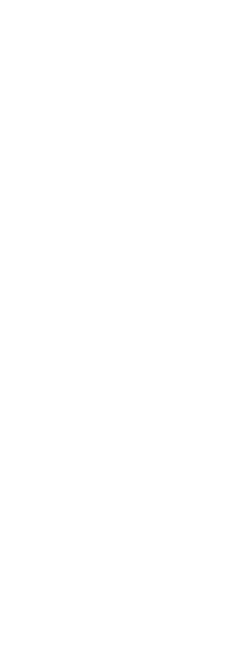
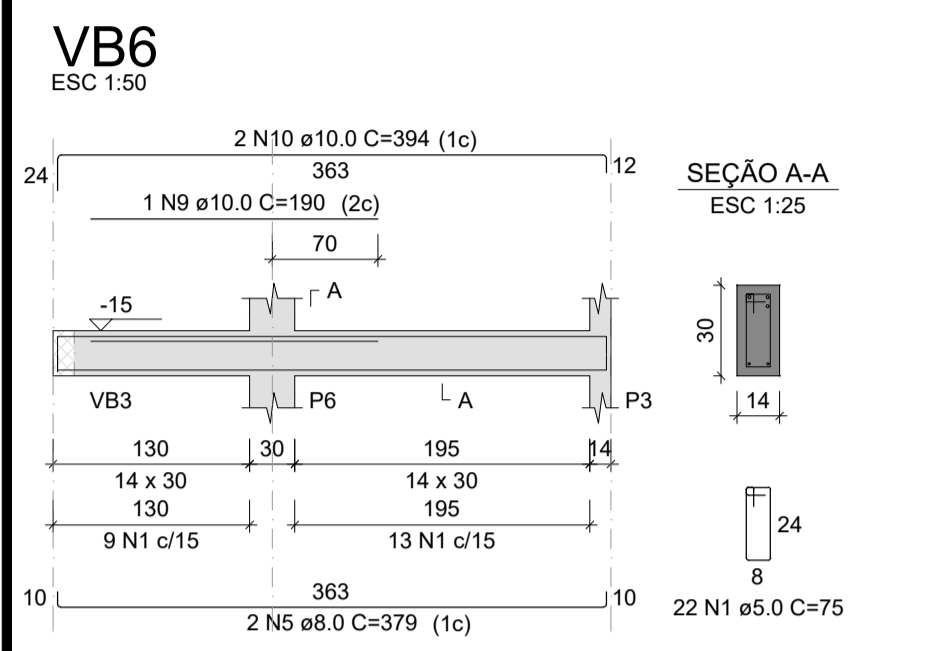
RELAÇÃO DO AÇO

AÇO	N	DIAM (mm)	QUANT	C.UNIT (cm)	C.TOTAL (cm)
CA60	1	5.0	173	75	12975
CA50	2	8.0	6	578	3468
	3	8.0	2	612	1224
	4	8.0	2	594	1188
	5	8.0	4	379	1516
	6	8.0	2	363	726
	7	8.0	2	397	794
	8	10.0	2	621	1242
	9	10.0	2	190	380
	10	10.0	4	394	1576

RESUMO DO AÇO

AÇO	DIAM (mm)	C.TOTAL (m)	PESO + 10% (kg)
CA50	8.0	89.2	38.7
CA60	10.0	32	21.7
CA60	10.0	129.8	22
CA50	8.0	60.4	22

Volume de concreto (C-25) = 1.06 m³
Área de forma = 18.67 m²



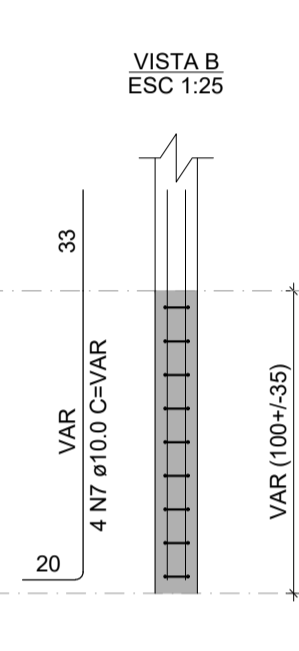
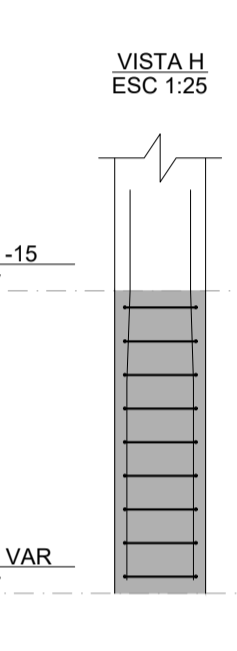
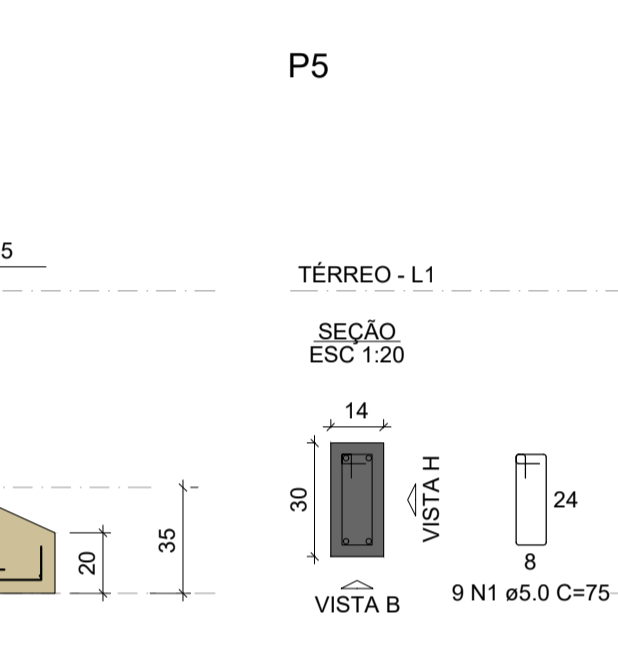
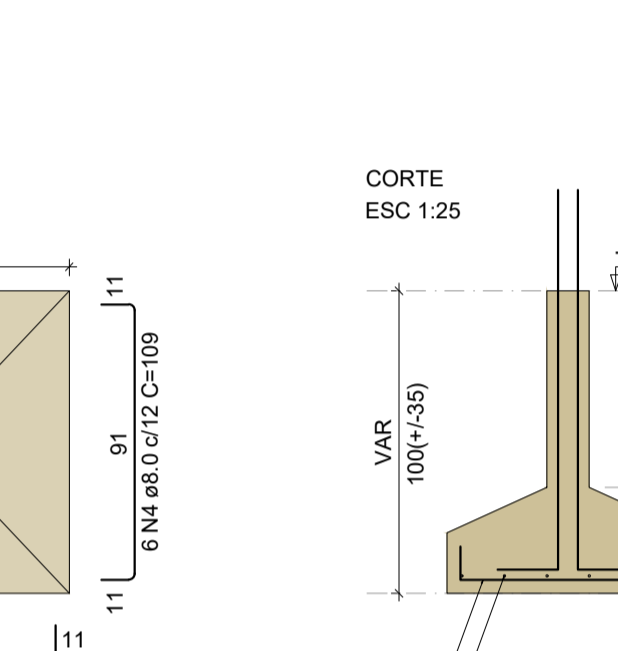
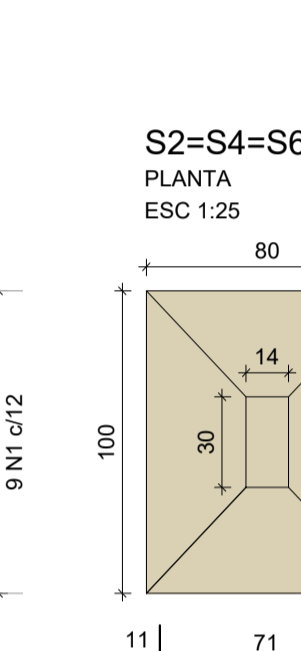
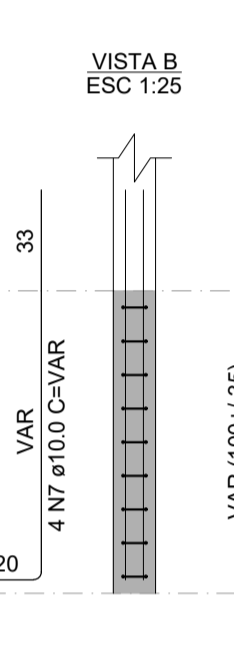
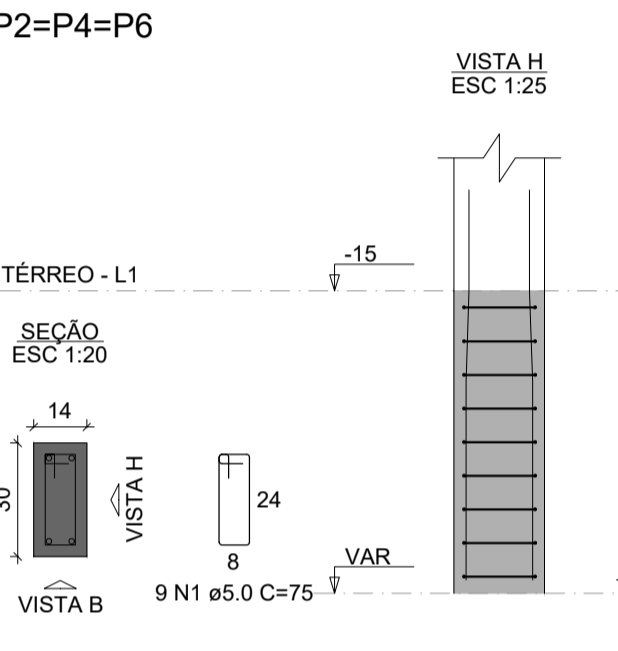
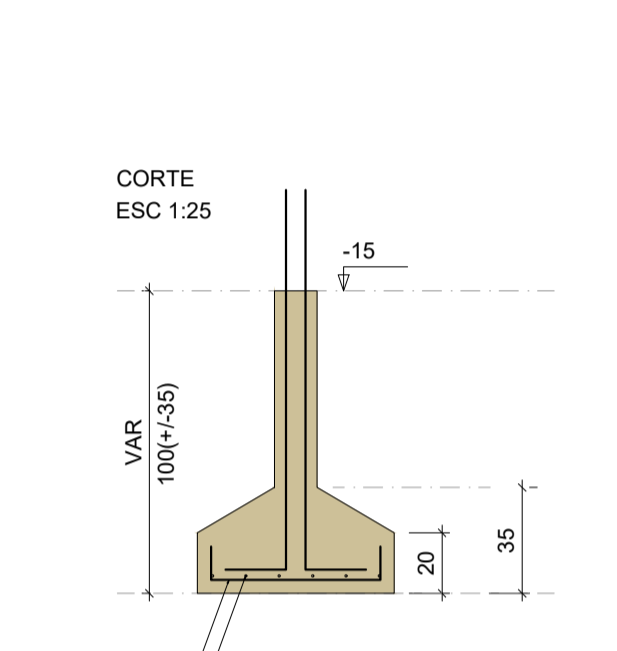
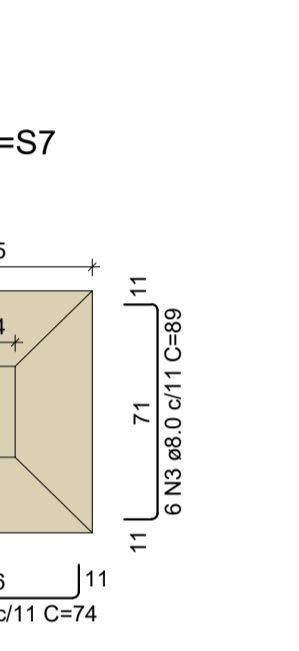
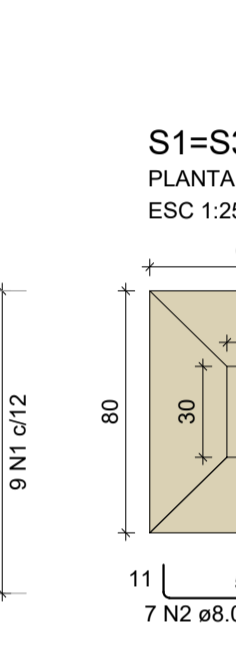
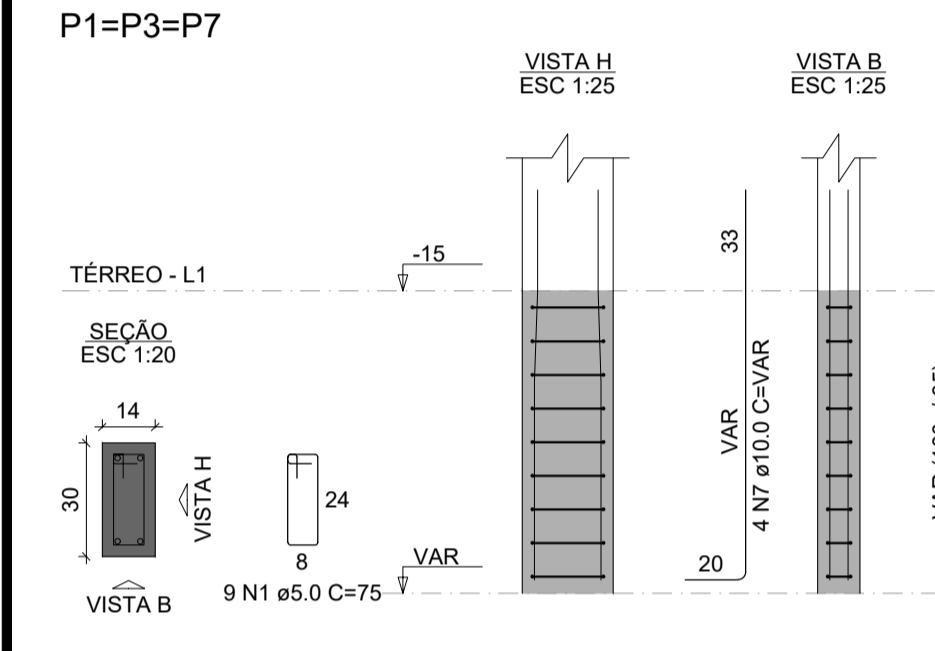
RELAÇÃO DO AÇO

AÇO	N	DIAM (mm)	QUANT	C.UNIT (cm)	C.TOTAL (cm)
CA50	1	6.3	24	293	7032
CA50	2	6.3	40	233	9320

RESUMO DO AÇO

AÇO	DIAM (mm)	C.TOTAL (m)	PESO + 10% (kg)
CA50	6.3	163.5	44
CA50	6.3	163.5	44

Volume de concreto (C-25) = 1.37 m³
Área de forma = 11.39 m²



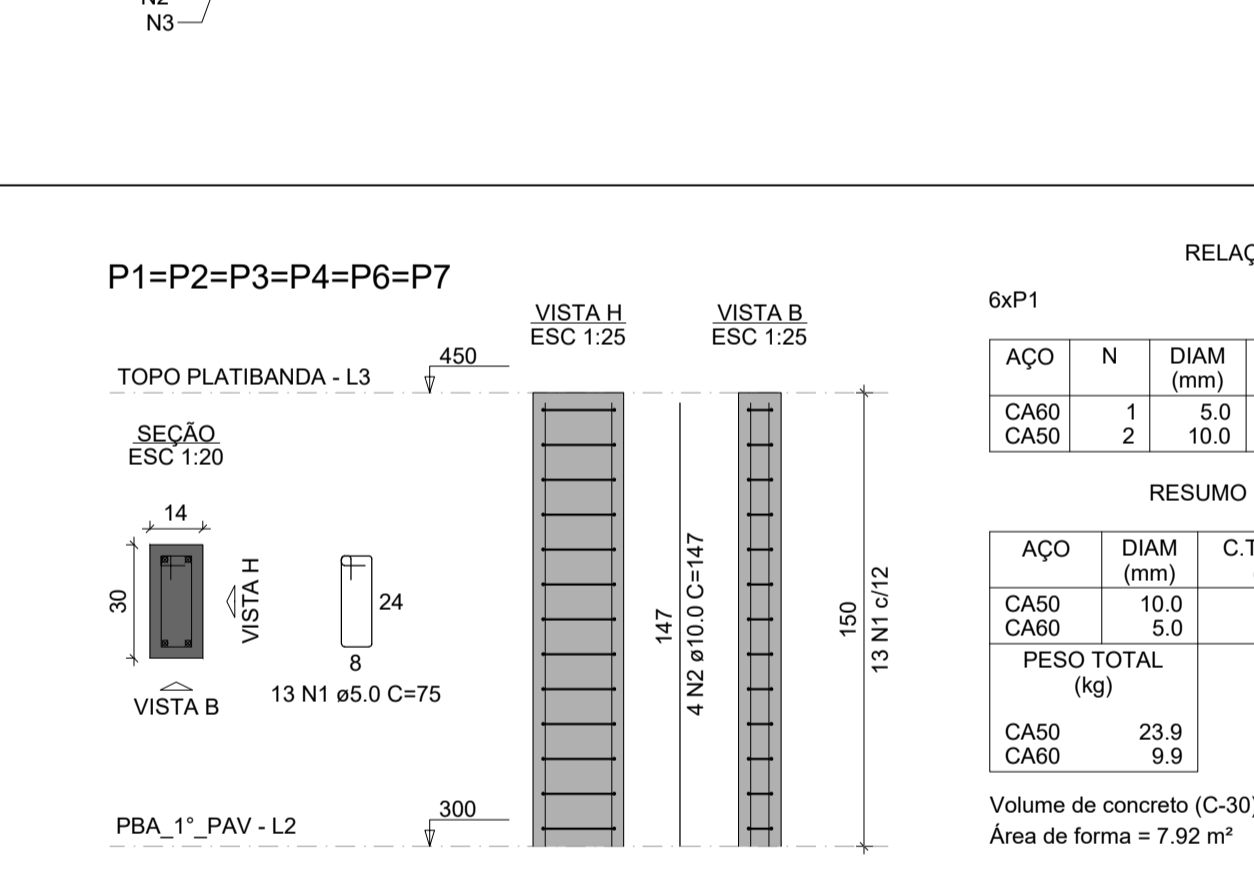
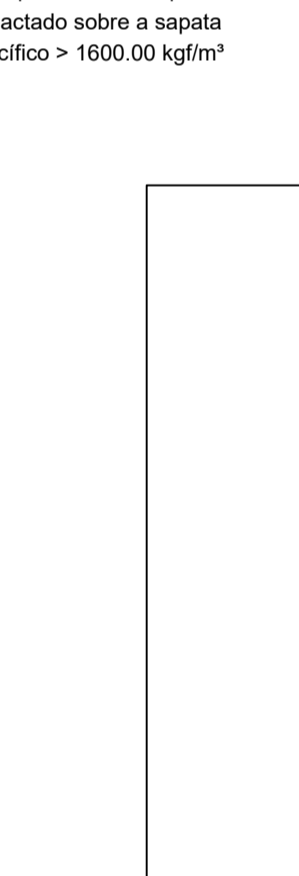
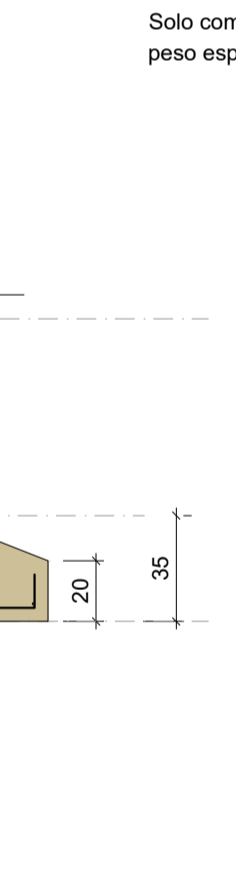
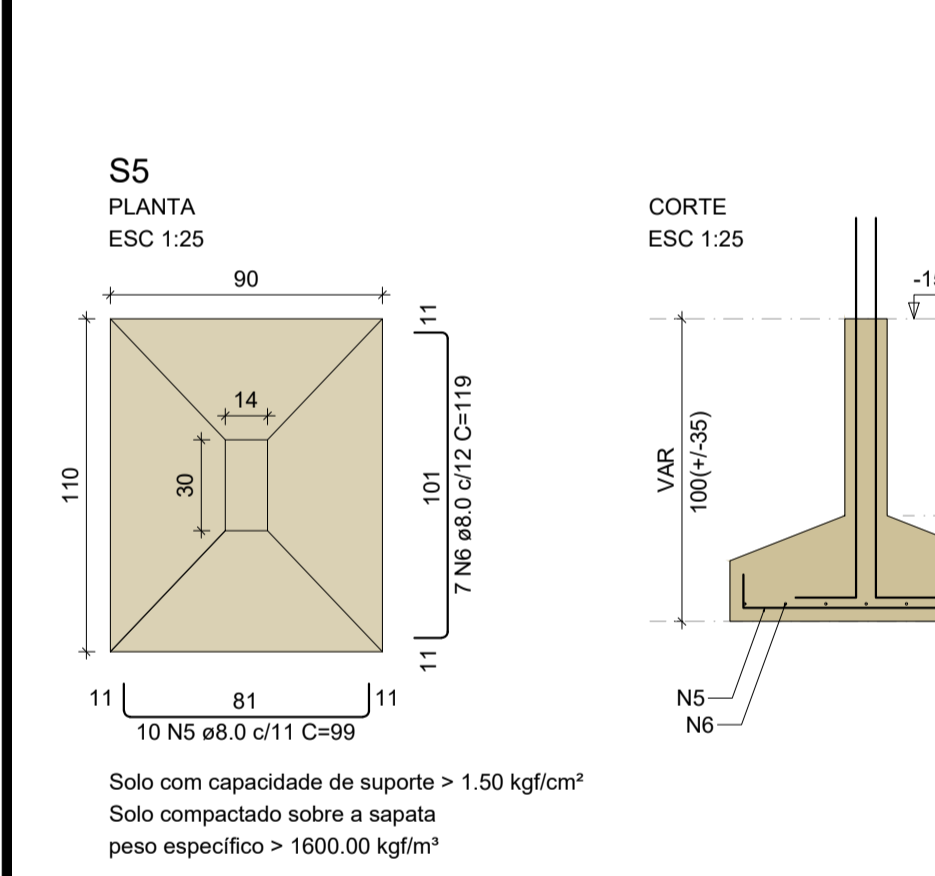
RELAÇÃO DO AÇO

AÇO	N	DIAM (mm)	QUANT	C.UNIT (cm)	C.TOTAL (cm)
CA60	1	5.0	63	75	4725
CA50	2	8.0	21	74	1554
	3	8.0	45	89	4005
	4	8.0	18	109	1962
	5	8.0	10	99	990
	6	8.0	7	119	833
	7	10.0	28	VAR	VAR

RESUMO DO AÇO

AÇO	DIAM (mm)	C.TOTAL (m)	PESO + 10% (kg)
CA50	8.0	93.4	40.6
CA60	10.0	41.2	27.9
CA60	5.0	47.3	8
CA50	8.0	68.5	8

Volume de concreto (C-30) = 0.19 m³
Volume de concreto (C-25) = 1.31 m³
Área de forma = 8.70 m²



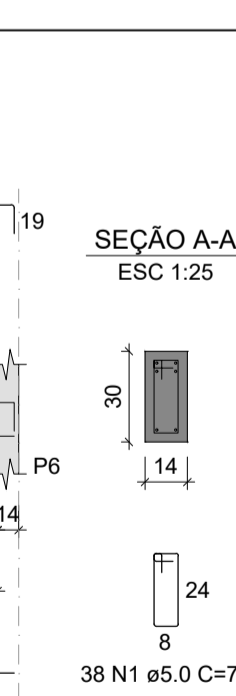
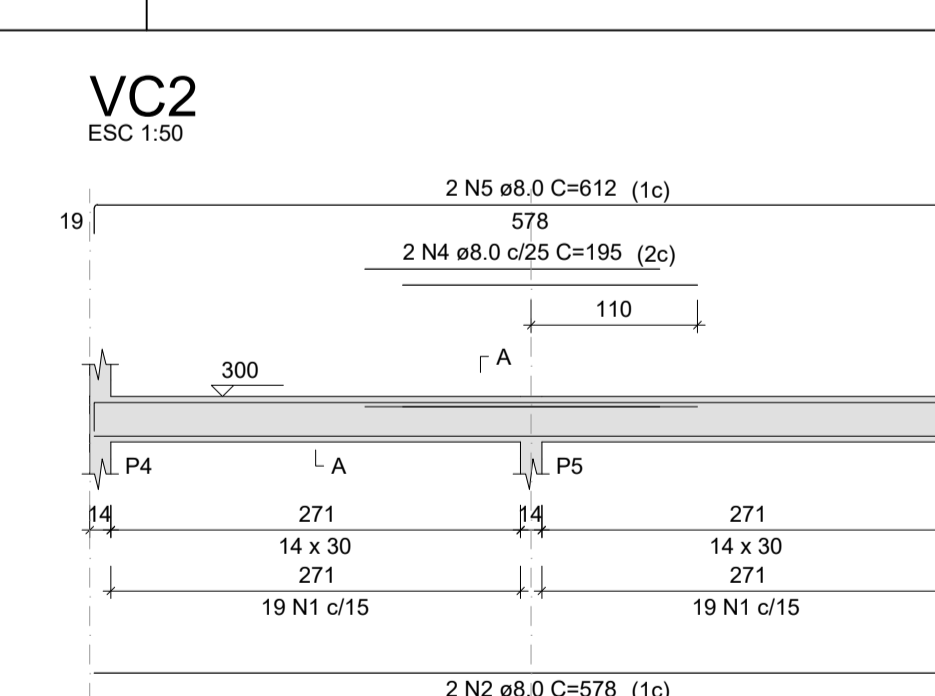
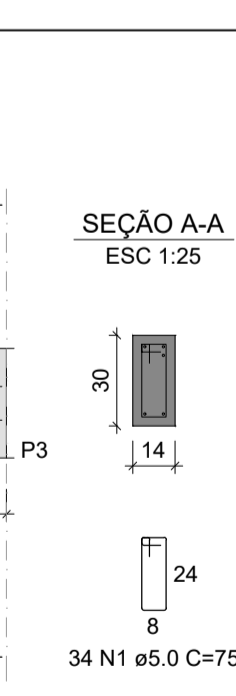
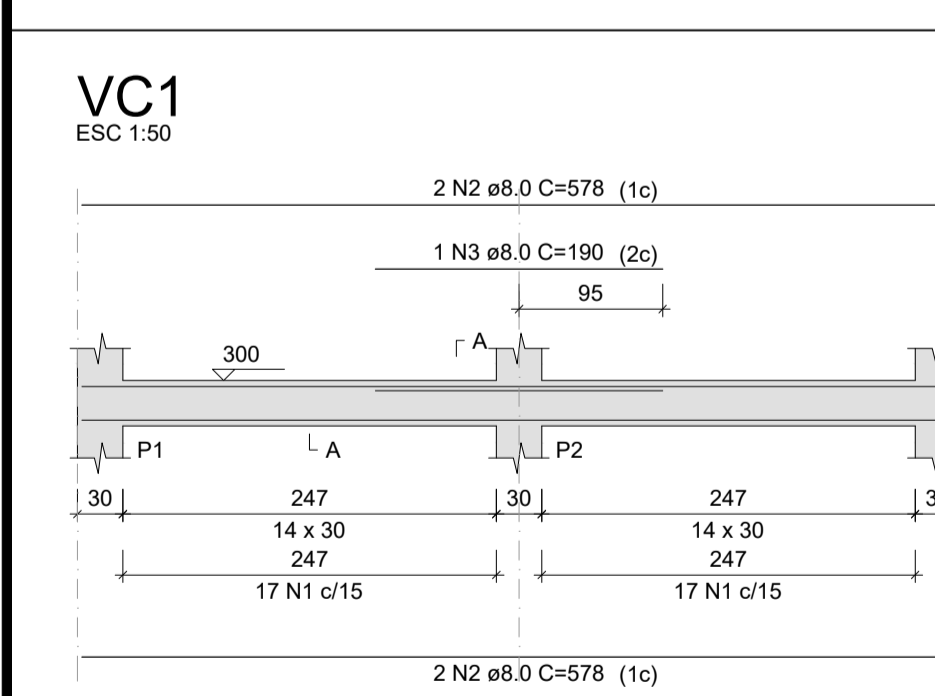
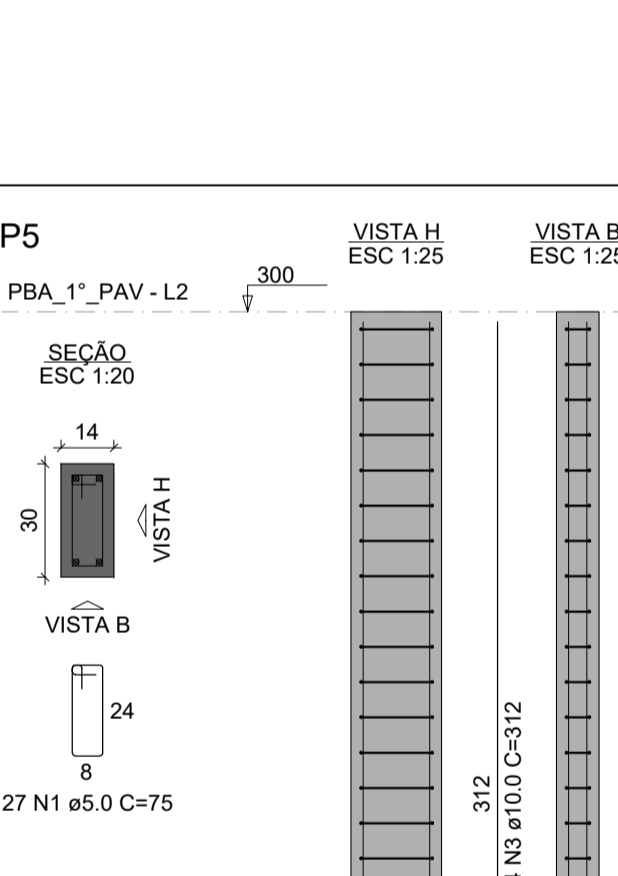
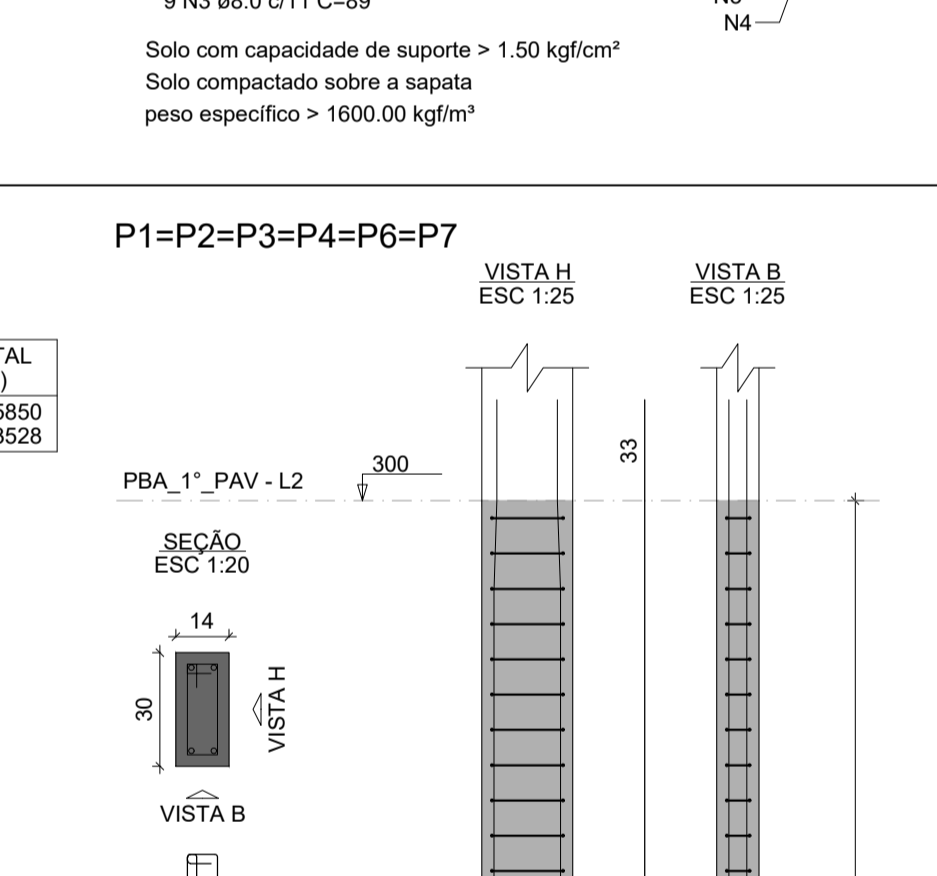
RELAÇÃO DO AÇO

AÇO	N	DIAM (mm)	QUANT	C.UNIT (cm)	C.TOTAL (cm)
CA60	1	5.0	78	75	5850
CA50	2	10.0	24	147	3528

RESUMO DO AÇO

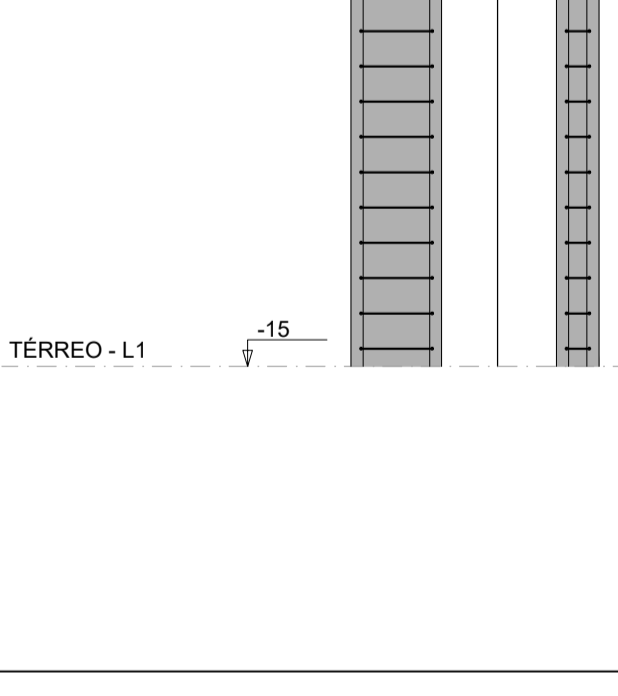
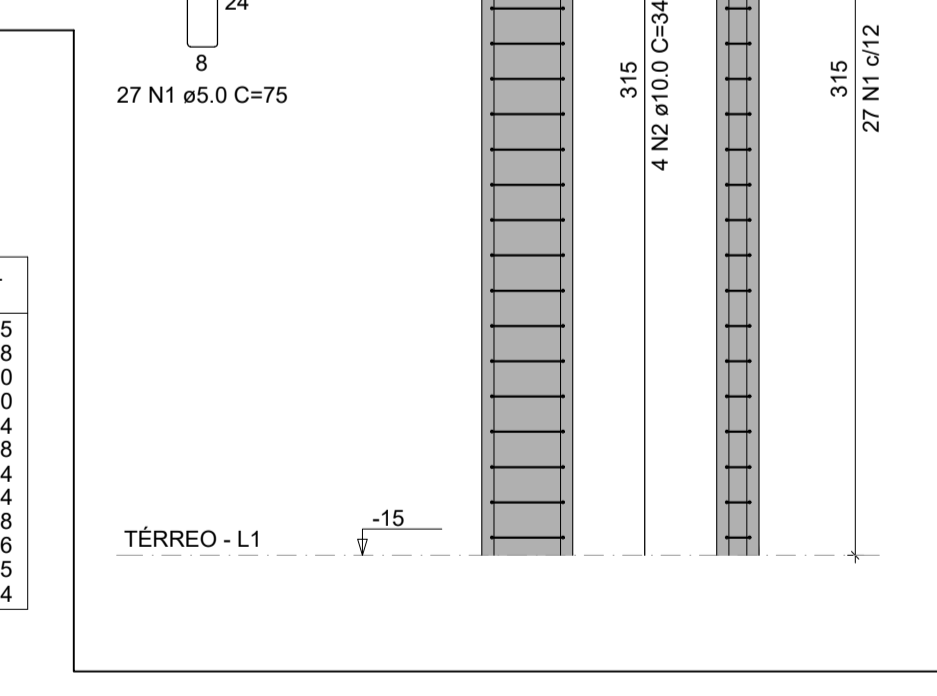
AÇO	DIAM (mm)	C.TOTAL (m)	PESO + 10% (kg)
CA50	10.0	35.3	23.9
CA60	5.0	58.5	9.9
CA50	10.0	23.9	9.9

Volume de concreto (C-30) = 0.38 m³
Área de forma = 7.92 m²



RELAÇÃO DO AÇO

AÇO	N	DIAM (mm)	QUANT	C.UNIT (cm)	C.TOTAL (cm)
CA60	1	5.0	173	75	12975
CA50	2	8.0	6	578	3468
	3	8.0	1	190	190
	4	8.0	2	195	390
	5	8.0	2	612	1224
	6	8.0	2	594	1188
	7	8.0	4	379	1516
	8	8.0	4	371	1484
	9	8.0	4	402	1608
	10	8.0	2	363	726
	11	8.0	1	145	145
	12	8.0	2	397	794



PROJETO ESTRUTURAL

OBRA: CONSTRUÇÃO DE UM ESPAÇO MOTOCICLISTICO

PROPRIETÁRIO: PREFEITURA MUNICIPAL DE RONDOLÂNDIA
CPF/ CNPJ: 04.221.486/0001-49

ENDEREÇO: LINHA 07, RONDOLÂNDIA - MT

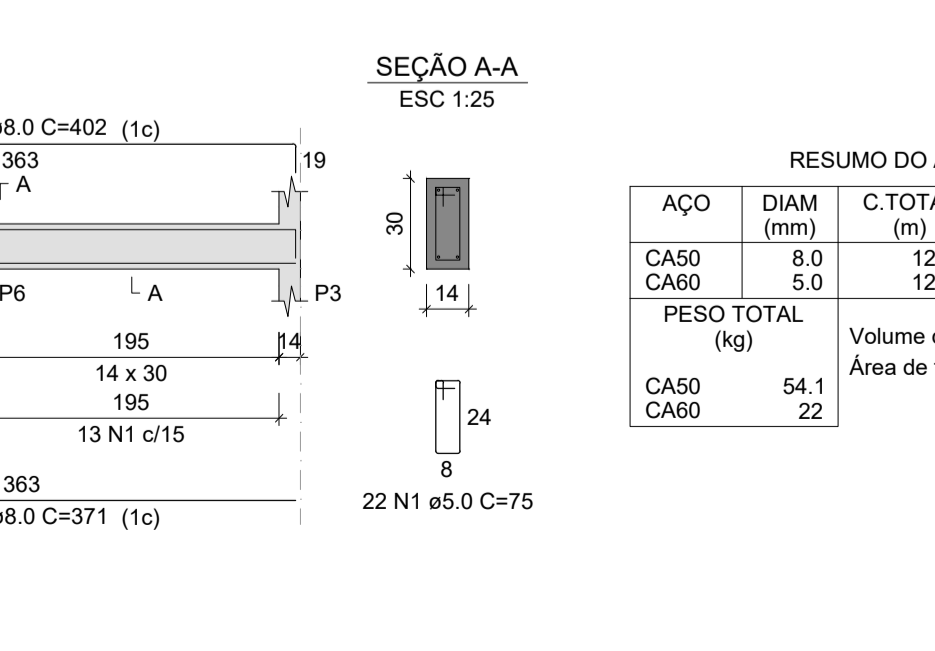
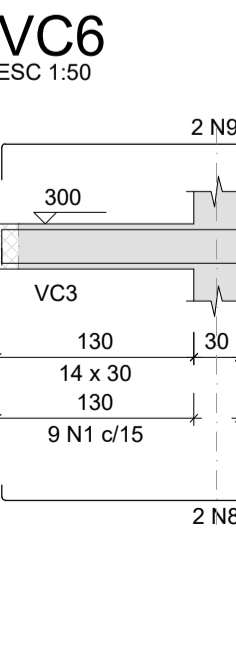
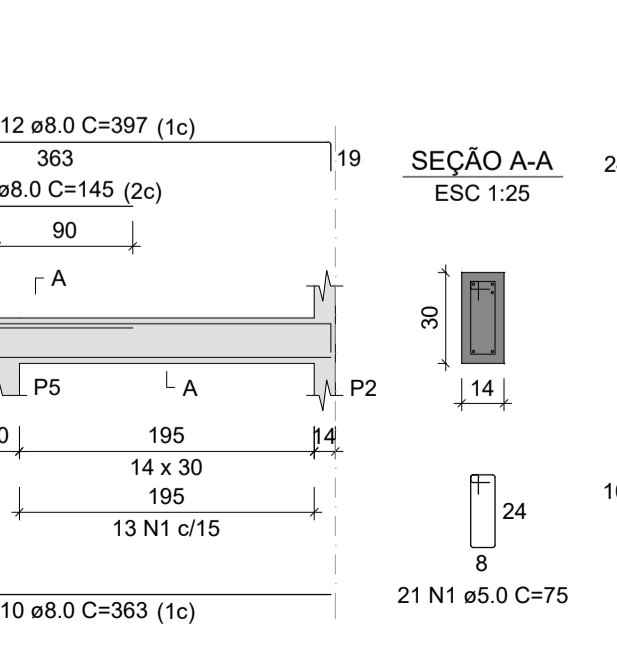
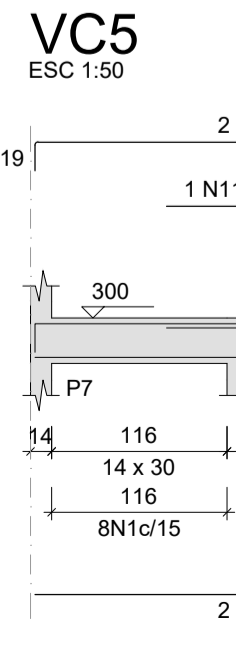
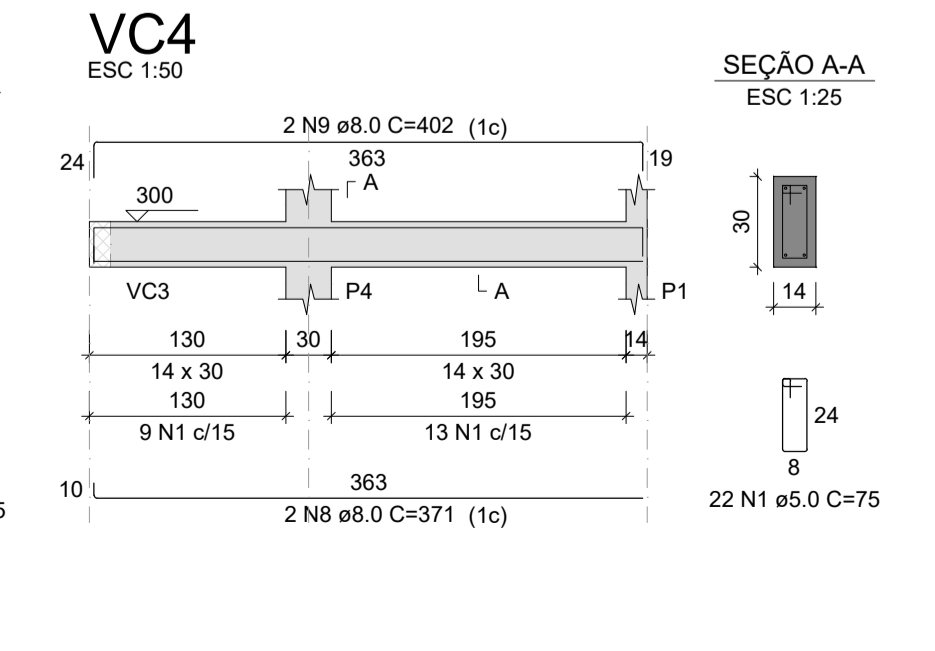
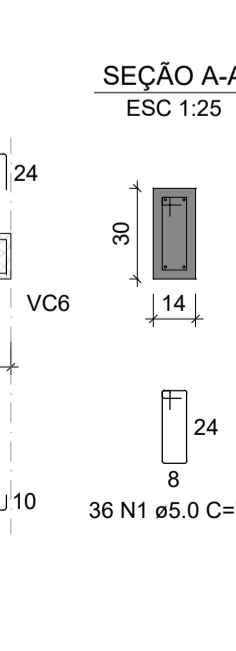
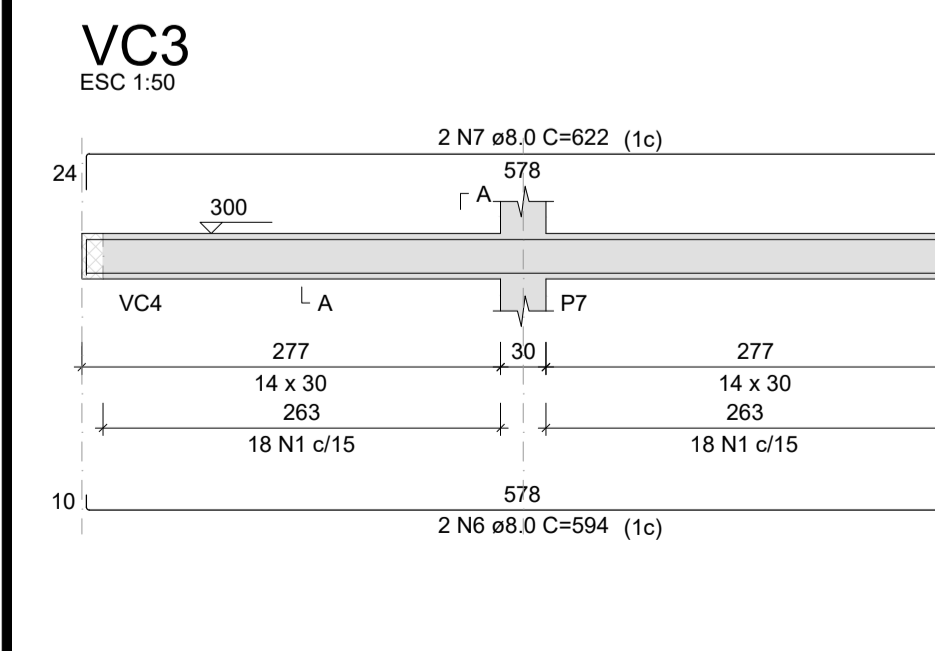
AUTOR DO PROJETO: JANETE MOREIRA LOPES
ENGENHEIRA CIVIL
CREA/ CAU: 9742 D/RO

RESP. P/ EXECUÇÃO: JANETE MOREIRA LOPES
ENGENHEIRA CIVIL
CREA/ CAU: 9742 D/RO

ESCALA: INDICADAS

ASSUNTO: DETALHAMENTOS ESTRUTURAIS BANHEIROS

FOLHA Nº: EST 04/05



RESUMO DO AÇO

AÇO	DIAM (mm)	C.TOTAL (m)	PESO + 10% (kg)
CA50	8.0	124.6	54.1
CA60	5.0	129.8	22
CA50	8.0	54.1	22

Volume de concreto (C-25) = 1.06 m³
Área de forma = 16.49 m²

NOME DO ARQUIVO DIGITAL: